



Lowering suspension systems

WAV WITH LOWERING SUSPENSION



Nissan NV400



Tomorrow's
safety today!



www.amf-bruns.de

ACCESSIBLE VEHICLES WITH LOWERING SUSPENSION

Nissan NV400



The lowered vehicle can be accessed by the wheelchair.



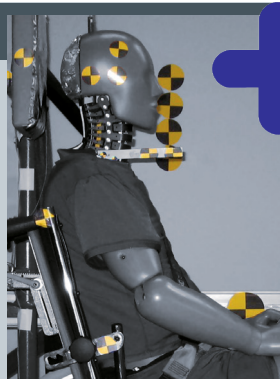
Vehicle with folded ramp. Rear view is maintained.



Vehicle ready for departure (standard height).



Lowered vehicle.



+ Tomorrow's safety today!

FUTURESAFE® Head- & backrest

FutureSafe is a safe, space-saving and comfortable patented safety system, which is flexibly customisable and comes with an integrated shoulder belt for the wheelchair occupant.

PROTEKTOR® Wheelchair & occupant restraint system

The AMF-Bruns Protektor restraint system meets DIN 75078 part II, ISO 10542.

PROSAFE® „Kraftknotenadapter“ Integrated lap belt

With the „Kraftknotenadapter“ system the wheelchair is quickly and precisely fitted to the vehicle's floor. It comes with a pelvic belt for the wheelchair occupant.

TECHNICAL DATA

» Lowering system	Strong, low-noise power pack, 12 V	» Lifting operation	Automatically when rear door is being closed
» Power	Electro-hydraulic from battery	» Wheel chair restraint	4-point wheelchair restraint system, crash tested
» Ramp	Aluminium with anti-slip surface, foldable in the centre, gas strut supported, profile: Euro Ramp	» Safety belt for the wheelchair occupant	Pelvis belt and automatic shoulder belt, slip-on wheelchair head rest
» Lowering operation	Via rocker switch in the rear		

AMF-BRUNS PROVIDES THE MAXIMUM OF SAFETY

- » EMC testing according to EU regulations
- » Security valves ensure smooth lowering and lifting of the vehicle
- » The AMF-Bruns 4-point restraint system meets DIN 75078, and ensures that the wheelchairs are safely fixed to the vehicle's floor
- » AMF-Bruns automatic shoulder belt is height-adjustable and in-vehicle tested according to DIN 75078 and EU regulation 2007/46
- » All mounting parts 20 G pull-tested



AMF-Bruns GmbH & Co. KG | Hauptstraße 101 | D-26689 Apen
Telefon +49 (0) 44 89 / 72 72 -33 / -50 / -38 | Fax +49 (0) 44 89 / 62 45
hubmatik@amf-bruns.de

www.amf-bruns.de



DIN EN ISO 9001
REG.-NR. 01 0105027